

VERSA
MANCHESTER
STUDIOS

**BONDED
UNDERGROUND
4-6**

**SPECIFICATION &
FLOORPLANS**

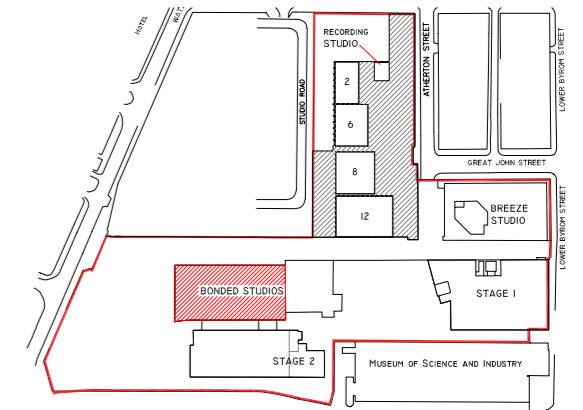
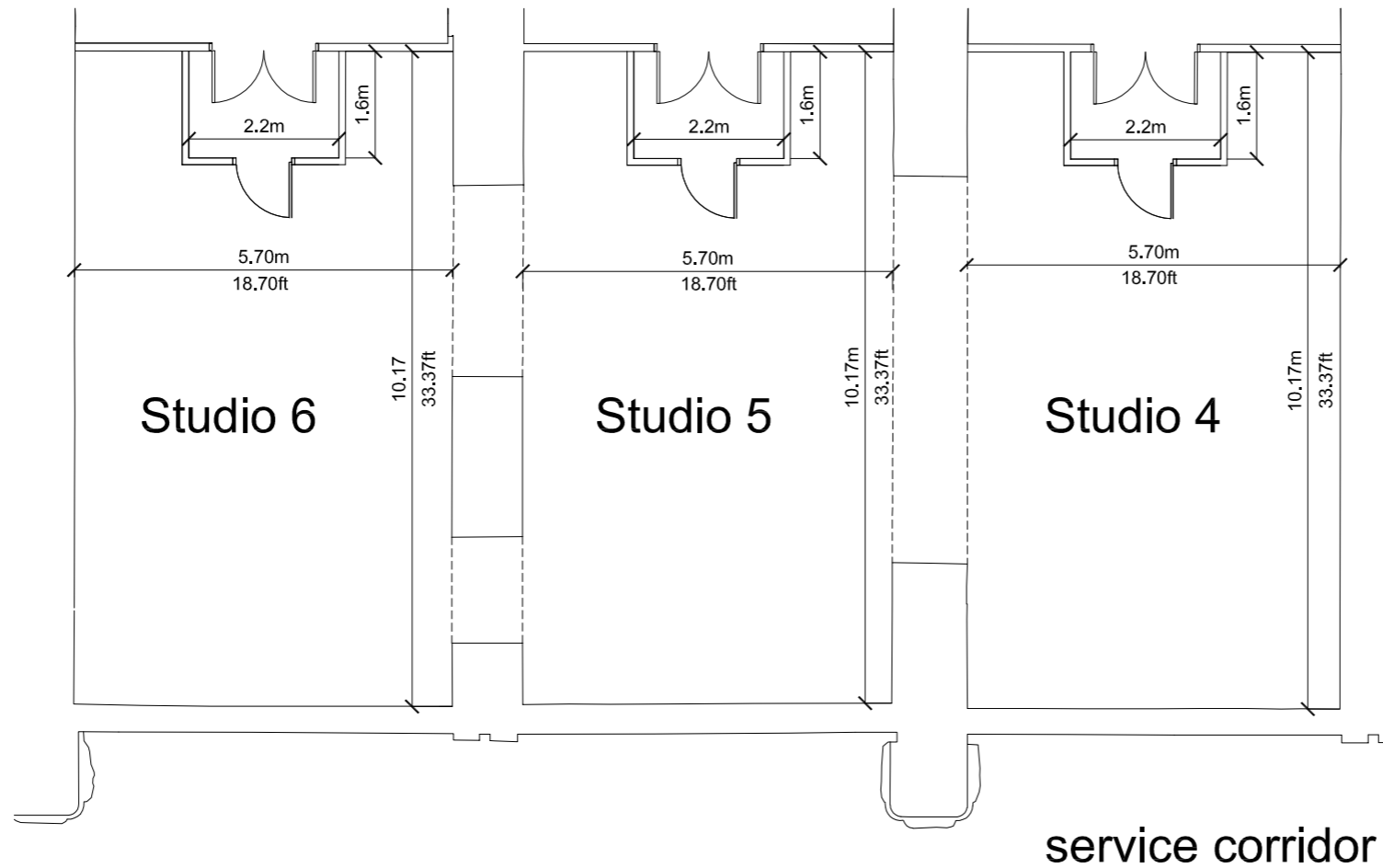
**BONDED
UNDERGROUND 4 - 6**

Floor space:	58 sq m / 624 sq ft
Capacity / audience:	5 – 30 persons (dependant upon layout)
Dimensions:	10.17 m x 5.70 m / 33.37 ft x 18.70 ft
Grid height / type:	3.5 m / 11.50 ft – Fixed Box Truss Grid System
Tab track height:	3 m / 9.84 ft
Gallery – Production:	Roll in gallery space
Studio power:	63 amp, 3-phase supply

VERSA

MANCHESTER STUDIOS

BONDED UNDERGROUND STUDIOS STUDIO 4, 5 & 6 PLAN



Location Plan

Bonded Underground - Studio 4 *Small Multi-Camera / Multi-Purpose Studio*

Floor space: 58 sq meters / 624 sq feet
 Capacity / Audience: 5 - 30 persons (dependent upon layout)
 Dimensions: 10.17m x 5.70m / 33.37ft x 18.70ft
 Grid Height / Type: 3.5m / 11.50ft - Fixed Box Truss Grid System
 Tab Track Height: 3m / 9.84ft
 Gallery - Roll in gallery space
 Studio Power: 64 Amp 3 Phase

Studio 4 boasts interconnectivity with Studio 5 and Studio 6

Bonded Underground - Studio 5 *Small Multi-Camera / Multi-Purpose Studio*

Floor space: 58 sq meters / 624 sq feet
 Capacity / Audience: 5 - 30 persons (dependent upon layout)
 Dimensions: 10.17m x 5.70m / 33.37ft x 18.70ft
 Grid Height / Type: 3.5m / 11.50ft - Fixed Box Truss Grid System
 Tab Track Height: 3m / 9.84ft
 Gallery - Roll in gallery space
 Studio Power: 64 Amp 3 Phase

Studio 5 boasts interconnectivity with Studio 4 and Studio 6

Bonded Underground - Studio 6 *Small Multi-Camera / Multi-Purpose Studio*

Floor space: 58 sq meters / 624 sq feet
 Capacity / Audience: 5 - 30 persons (dependent upon layout)
 Dimensions: 10.17m x 5.70m / 33.37ft x 18.70ft
 Grid Height / Type: 3.5m / 11.50ft - Fixed Box Truss Grid System
 Tab Track Height: 3m / 9.84ft
 Gallery - Roll in gallery space
 Studio Power: 64 Amp 3 Phase

Studio 6 boasts interconnectivity with Studio 4 and Studio 5

Production:	Bonded Underground Studios Studio 4, 5 & 6 Plan
Director:	
Designer:	
Drawn By:	GH
Production Date:	
Scale:	1:50 @ A1
Version:	
Useful Tele N°:	

Measurements are included as an approximate guide.
 Please double check on site if critical to production.

ADEQUATE ARRANGEMENTS FOR ACCESS AND
 EGRESS TO AND FROM THE STUDIO SHOULD BE
 ALLOWED IN LINE WITH REGULATIONS