

# VERSA

MANCHESTER  
STUDIOS

## STUDIO 1

---

# SPECIFICATION & FLOORPLANS

### STUDIO 1

Floor space:	947.74 sq m / 10,200.70 sq ft
Capacity / audience:	170 - 600 persons (dependant upon layout)
Dimensions:	37.46 m x 25.30 m / 122.9ft x 83 ft
Grid height / type:	8 m / 26.25 ft slung grid
Tab track height:	7.50 m / 24.61 ft
Gallery – Production:	Yes
Gallery – Lighting:	Yes
Gallery – Sound:	Yes
Studio power:	600 amp, 3-phase supply

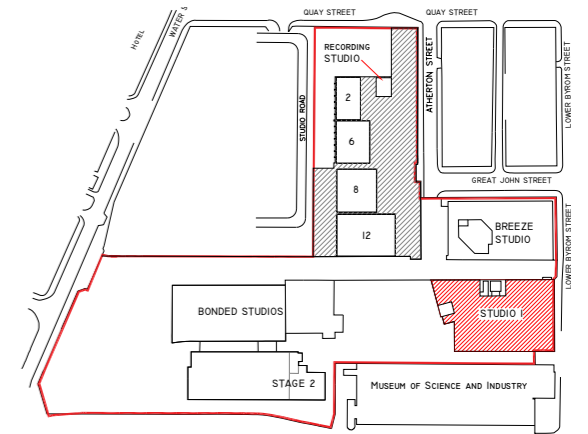
### ANNEX STUDIO

Floor space:	304.80 sq m / 3,280.34 sq ft
Capacity / audience:	50 – 100 persons (dependant upon layout)
Dimensions:	30 m x 10.16 m / 98.42 ft x 33.33 ft
Lowest ceiling height:	5.30 m

# VERSA

## MANCHESTER STUDIOS

### STUDIO 1 PLAN GROUND FLOOR PLAN



#### Location Plan

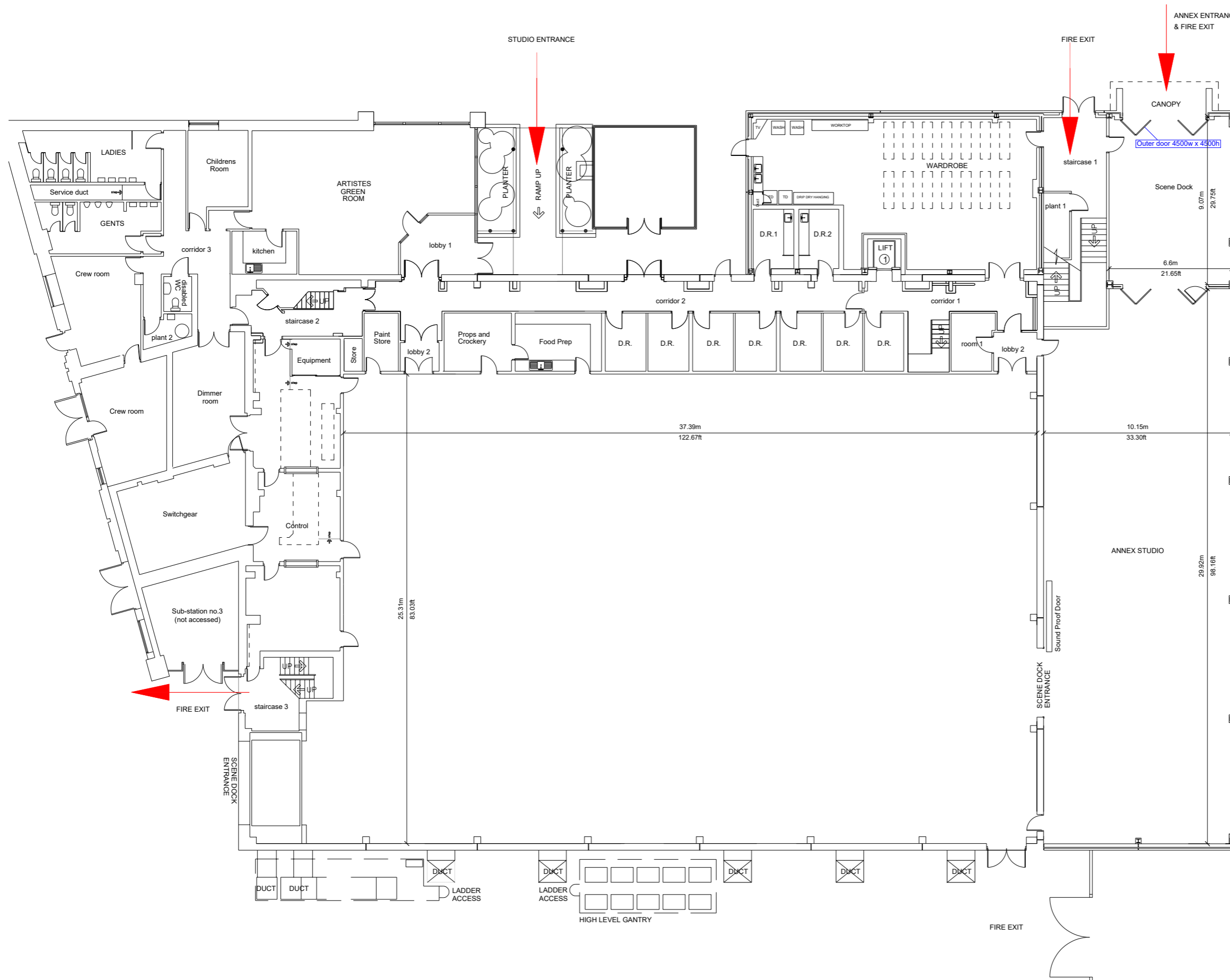
**Studio 1**  
Extra Large size multi-camera TV studio

**Main Studio**  
Floor space: 947.74 sq meters / 10,200.70 sq feet  
Capacity / Audience: 170 - 600 persons (dependent upon layout)  
Dimensions: 37.46m x 25.30m / 122.90ft x 83ft  
Grid Height / Type: 8m / 26.25ft Slung Grid  
Tab Track Height: 7.50m / 24.61ft  
Gallery - Production: Yes  
Gallery - Lighting: Yes  
Gallery - Sound: Yes  
Studio Power: 600 Amp 3 Phase

**Annex Studio**  
Floor space: 304.80 sq meters / 3,280.34 sq feet  
Capacity / Audience: 50 - 100 persons (dependent upon layout)  
Dimensions: 30m x 10.16 / 98.42ft x 33.33ft  
Lowest Ceiling Height: 5.30m

Measurements are included as an approximate guide.  
Please double check on site if critical to production.

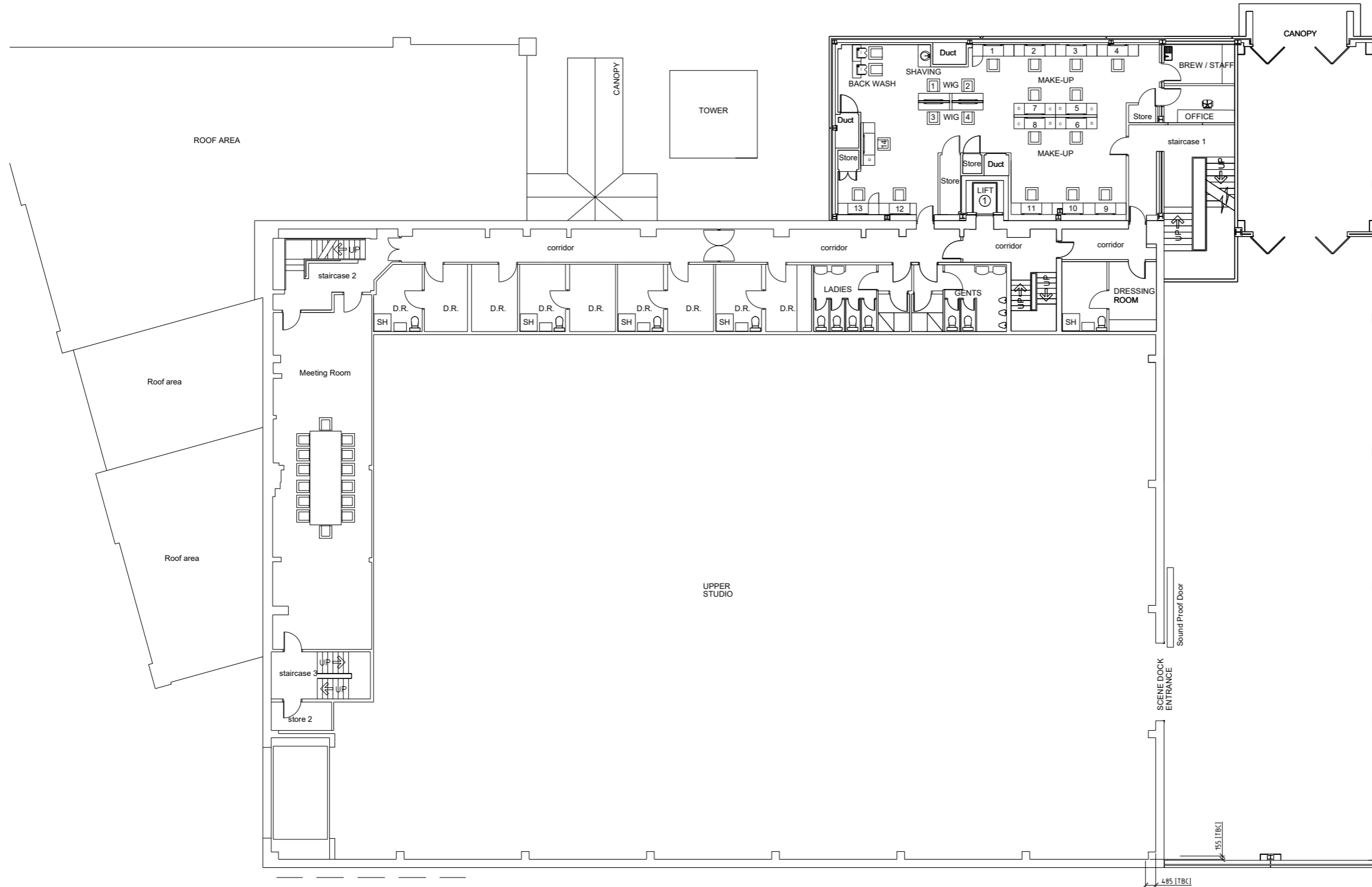
ADEQUATE ARRANGEMENTS FOR ACCESS AND  
EGRESS TO AND FROM THE STUDIO SHOULD BE  
ALLOWED IN LINE WITH REGULATIONS



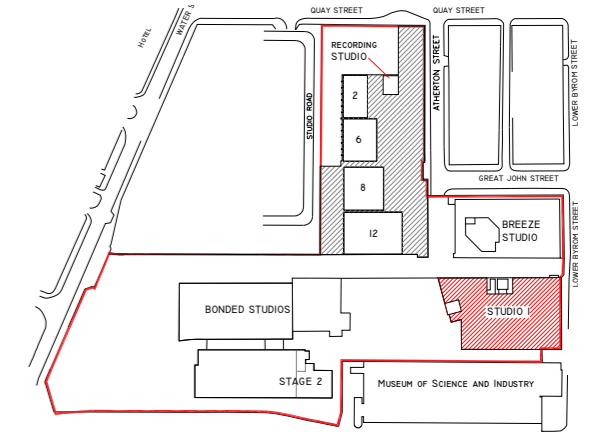
Production:	STUDIO 1 Ground Floor Plan
Director:	
Designer:	
Drawn By:	
Production Date:	
Scale:	1:100 @ A1
Version:	
Useful Tele N°:	

# VERSA

## MANCHESTER STUDIOS



**STUDIO 1 PLAN**  
FIRST FLOOR PLAN



**Location Plan**

**Studio 1**  
Extra Large size multi-camera TV studio

**Main Studio**  
 Floor space: 947.74 sq meters / 10,200.70 sq feet  
 Capacity / Audience: 170 - 600 persons (dependent upon layout)  
 Dimensions: 37.46m x 25.30m / 122.90ft x 83ft  
 Grid Height / Type: 8m / 26.25ft Slung Grid  
 Tab Track Height: 7.50m / 24.61ft  
 Gallery - Production: Yes  
 Gallery - Lighting: Yes  
 Gallery - Sound: Yes  
 Studio Power: 600 Amp 3 Phase

**Annex Studio**  
 Floor space: 304.80 sq meters / 3,280.34 sq feet  
 Capacity / Audience: 50 - 100 persons (dependent upon layout)  
 Dimensions: 30m x 10.16 / 98.42ft x 33.33ft  
 Lowest Ceiling Height: 5.30m

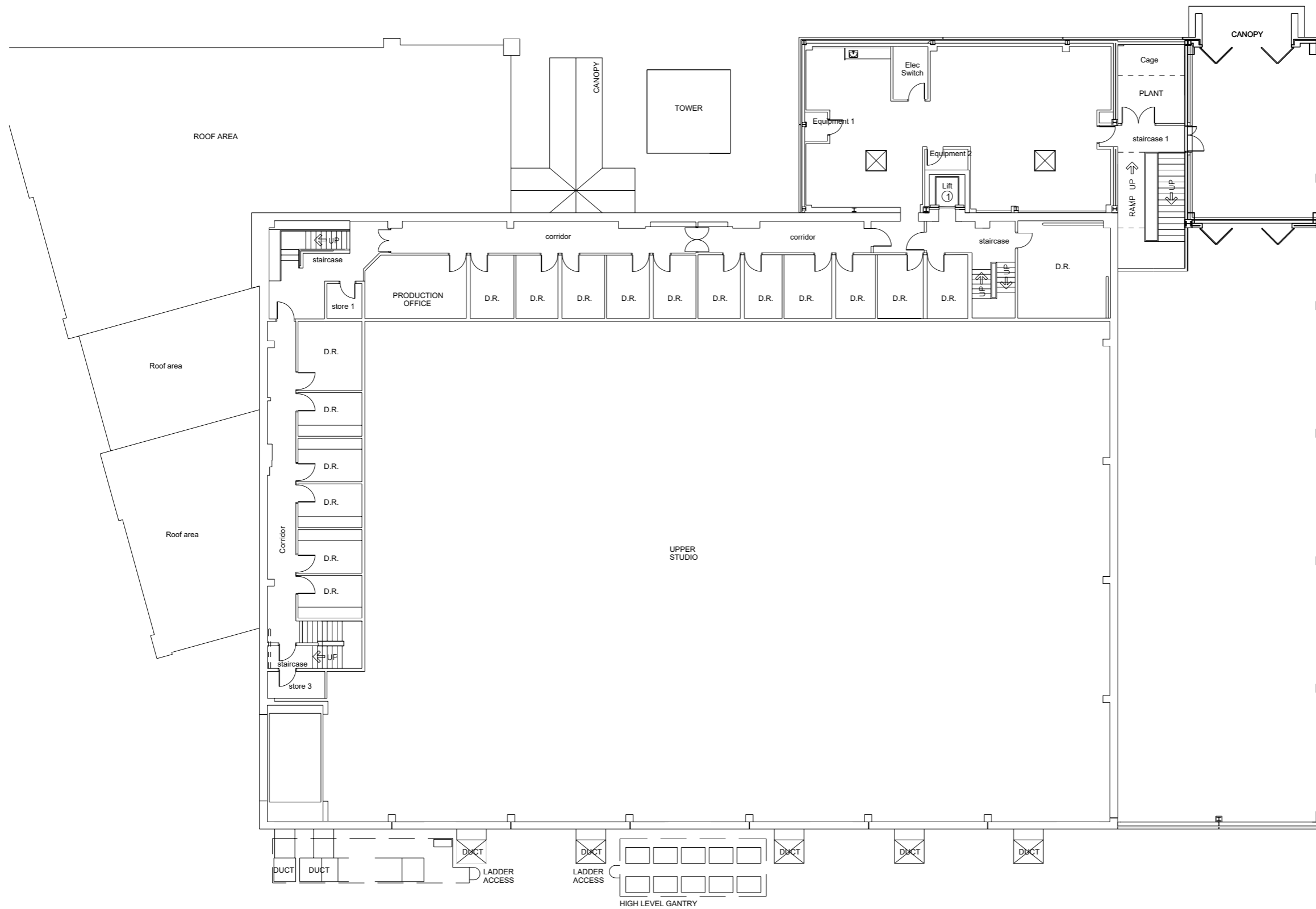
Measurements are included as an approximate guide.  
Please double check on site if critical to production.

ADEQUATE ARRANGEMENTS FOR ACCESS AND EGRESS TO AND FROM THE STUDIO SHOULD BE ALLOWED IN LINE WITH REGULATIONS

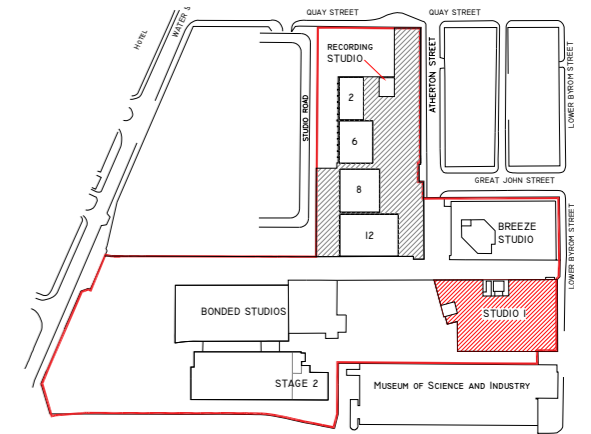
Production:	STUDIO 1 First Floor Plan
Director:	
Designer:	
Drawn By:	
Production Date:	
Scale:	1:100 @ A1
Version:	
Useful Tele N°:	

# VERSA

## MANCHESTER STUDIOS



### STUDIO 1 PLAN SECOND FLOOR PLAN



### Location Plan

**Studio 1**  
Extra Large size multi-camera TV studio

**Main Studio**  
 Floor space: 947.74 sq meters / 10,200.70 sq feet  
 Capacity / Audience: 170 - 600 persons (dependent upon layout)  
 Dimensions: 37.46m x 25.30m / 122.90ft x 83ft  
 Grid Height / Type: 8m / 26.25ft Slung Grid  
 Tab Track Height: 7.50m / 24.61ft  
 Gallery - Production: Yes  
 Gallery - Lighting: Yes  
 Gallery - Sound: Yes  
 Studio Power: 600 Amp 3 Phase

**Annex Studio**  
 Floor space: 304.80 sq meters / 3,280.34 sq feet  
 Capacity / Audience: 50 - 100 persons (dependent upon layout)  
 Dimensions: 30m x 10.16 / 98.42ft x 33.33ft  
 Lowest Ceiling Height: 5.30m

Measurements are included as an approximate guide.  
Please double check on site if critical to production.

ADEQUATE ARRANGEMENTS FOR ACCESS AND  
EGRESS TO AND FROM THE STUDIO SHOULD BE  
ALLOWED IN LINE WITH REGULATIONS

Production:	STUDIO 1 Second Floor Plan
Director:	
Designer:	
Drawn By:	
Production Date:	
Scale:	1:100 @ A1
Version:	
Useful Tele N°:	