

# VERSA

LEEDS  
STUDIOS

## STAGE 4

# SPECIFICATION & FLOORPLANS

### STAGE 4

Floor space:

2523.43 sq m / 27162 sq ft

Electrical - In stage:

400a Power lock three-phase  
12x 13a twin switched sockets  
4x 32a three-phase  
4x 125a single phase  
4x 63a single phase  
6x 32a single phase  
6x 16a single phase

Electrical - Stage tech room

13x Twin switched sockets (Tech Room)  
4x 16a single phase

Grid:

Sectional truss block max load  
99kg / 0.099 metric ton per section

Loading access:

1x Sectional overhead 5.62m x 7.65m

Floor Loading:

30kN/m<sup>2</sup>

Heating:

Gas fired

Connectivity:

6 outlets in stage

Wifi

Site-wide wireless coverage

Water on stage

Belfast sink with hot/cold supply & 2x cold water feeds

Fire Protection

Smoke detection (can be isolated)

Fire Extinguishers

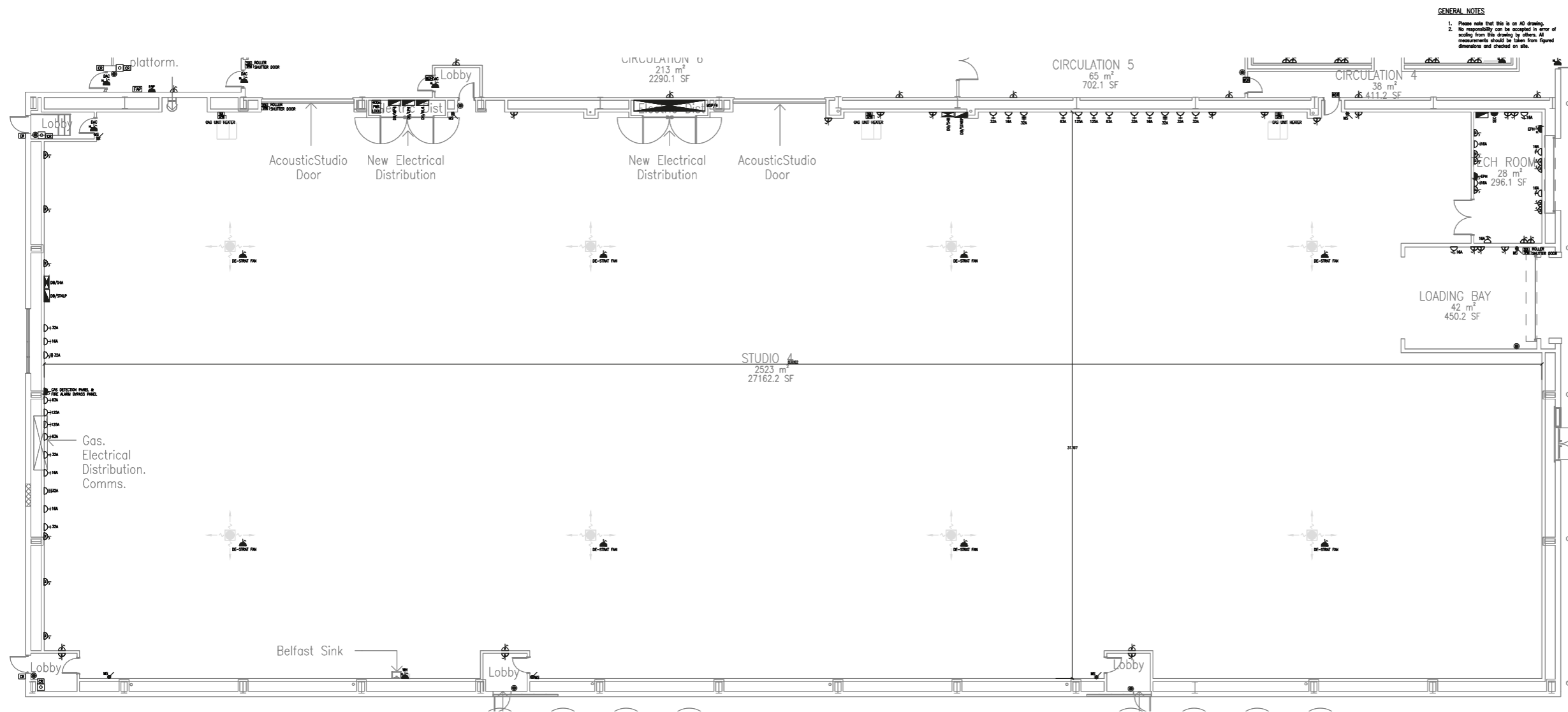
Foam, CO<sub>2</sub>

Accessible WC

Yes

# VERSA

## LEEDS STUDIOS



**GENERAL NOTES**  
 1. Please note that this is an AD drawing.  
 2. No responsibility can be accepted in error of omissions from this drawing by others. All measurements should be taken from figured dimensions and checked on site.

LEGEND	
SYMBOL	DESCRIPTION
	CLEANERS SOCKET OUTLET
	SINGLE SWITCHED SOCKET OUTLET
	TWIN SWITCHED SOCKET OUTLET
	SWITCHED FUSED SPUR
	SWITCHED FUSED SPUR WITH FLEX OUTLET
	UNSWITCHED FUSED SPUR
	UNSWITCHED FUSED SPUR WITH FLEX OUTLET
	SINGLE PHASE INDUSTRIAL SOCKET
	THREE PHASE INDUSTRIAL SOCKET
	ISOLATOR
	400A POWER LOCK
	3 PHASE DISTRIBUTION BOARD
	SINGLE PHASE DISTRIBUTION BOARD
	MCCB PANEL BOARD
	MASTER LIGHT SWITCH
	MANUAL CALL POINT
	ACCESS CONTROL GREEN BREAK GLASS
	CARD READER
	WIRELESS CARD READER IN DOOR LOCK