

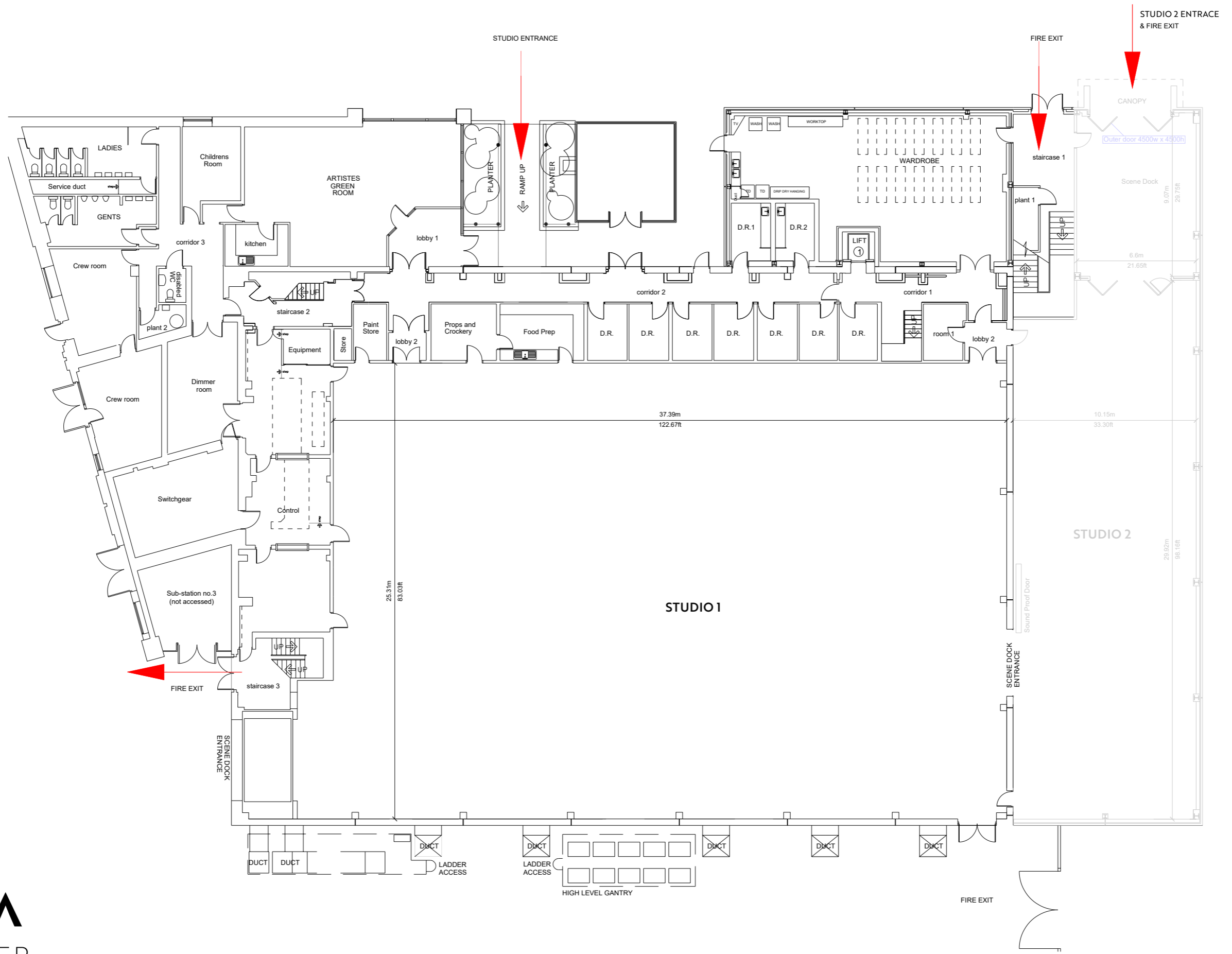
VERSA

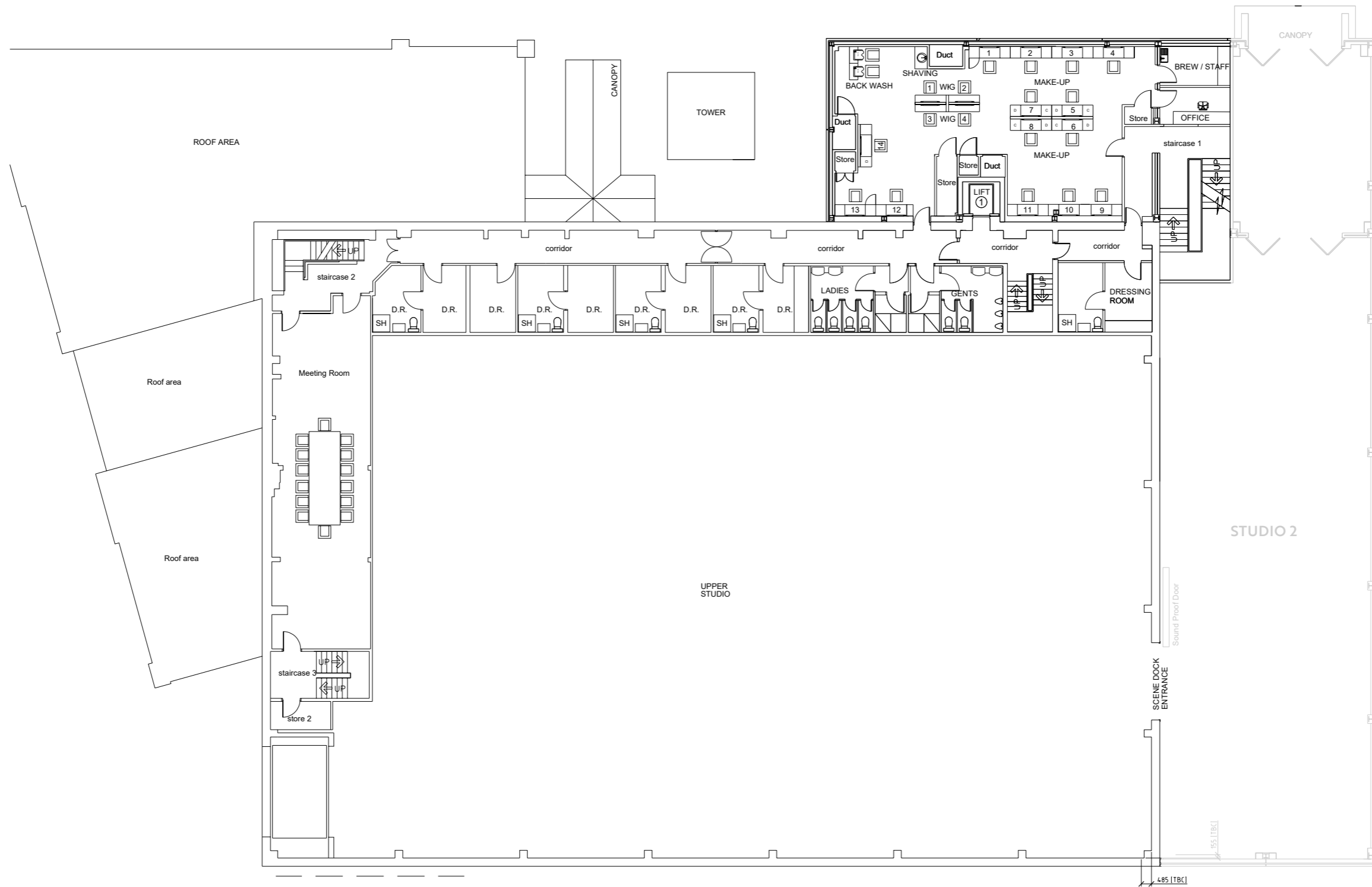
MANCHESTER
STUDIOS

STUDIO 1

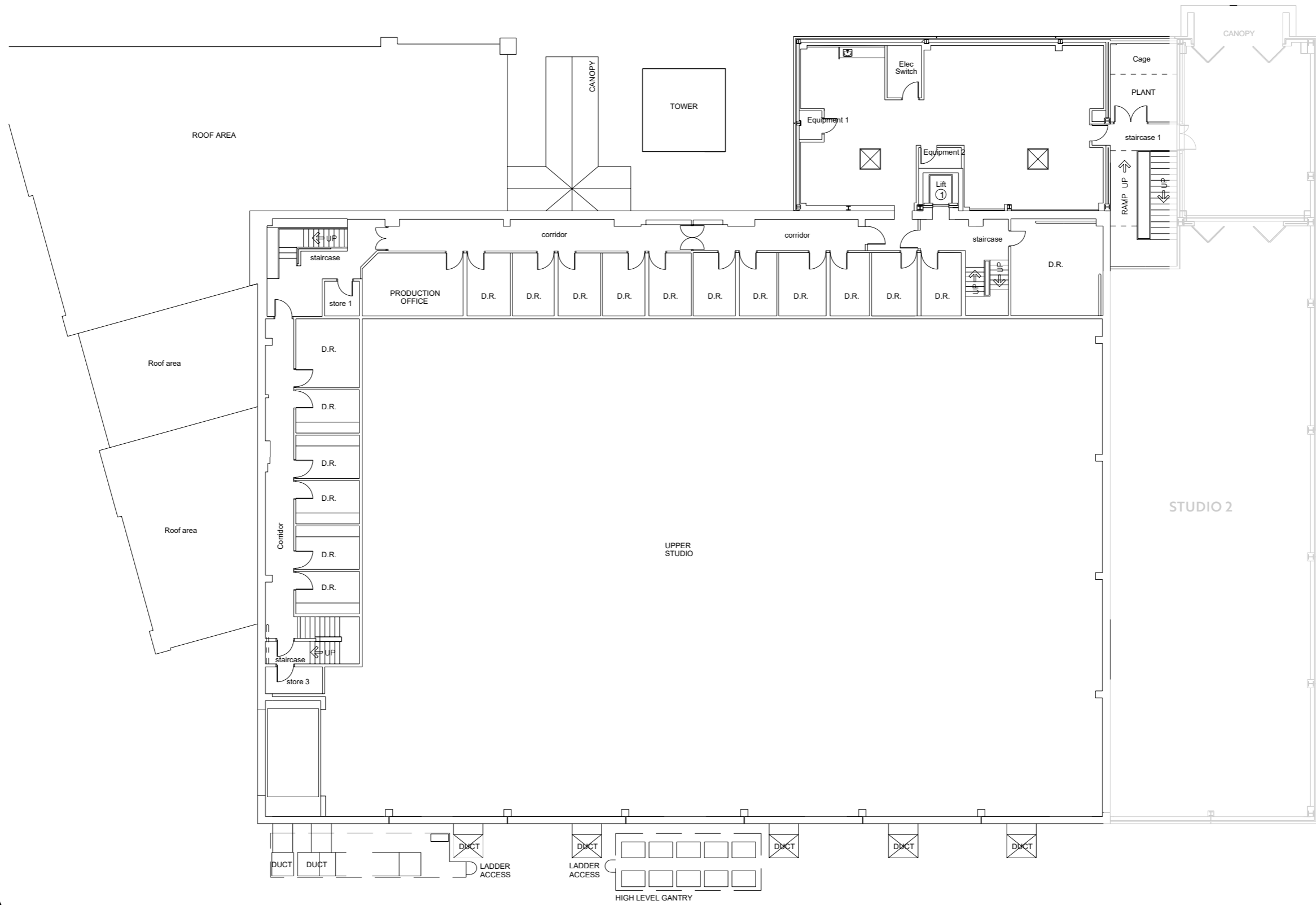
SPECIFICATION & FLOORPLANS

Floor space:	925 sq m / 10,000 sq ft
Capacity / audience:	170 - 600 persons (dependant upon layout)
Dimensions:	37 m x 25 m / 122ft x 82 ft
Grid height / type:	8 m / 26.25 ft slung grid
Tab track height:	7.50 m / 24.61 ft
Gallery – Production:	Yes
Gallery – Lighting:	Yes
Gallery – Sound:	Yes
Studio power:	600 amp, 3-phase supply





VERSA
MANCHESTER
STUDIOŞ



VERSA
MANCHESTER
STUDIOS

VERSA

MANCHESTER
STUDIOS

STUDIO 2

SPECIFICATION & FLOORPLANS

Floor space:

280 sq m / 3,000 sq ft

Capacity / audience:

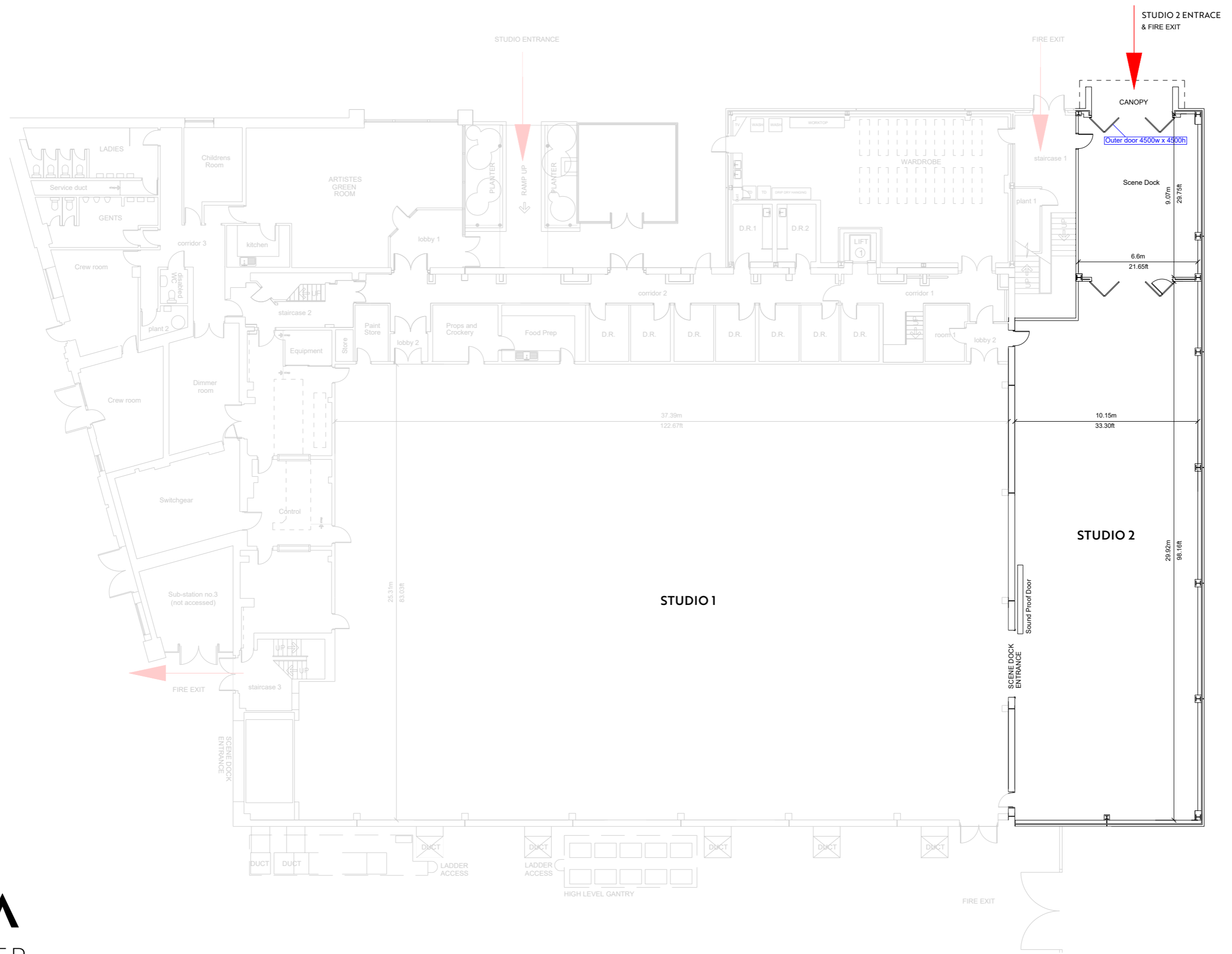
50 – 100 persons (dependant upon layout)

Dimensions:

28 m x 10 m / 91 ft x 33 ft

Lowest ceiling height:

5.30 m



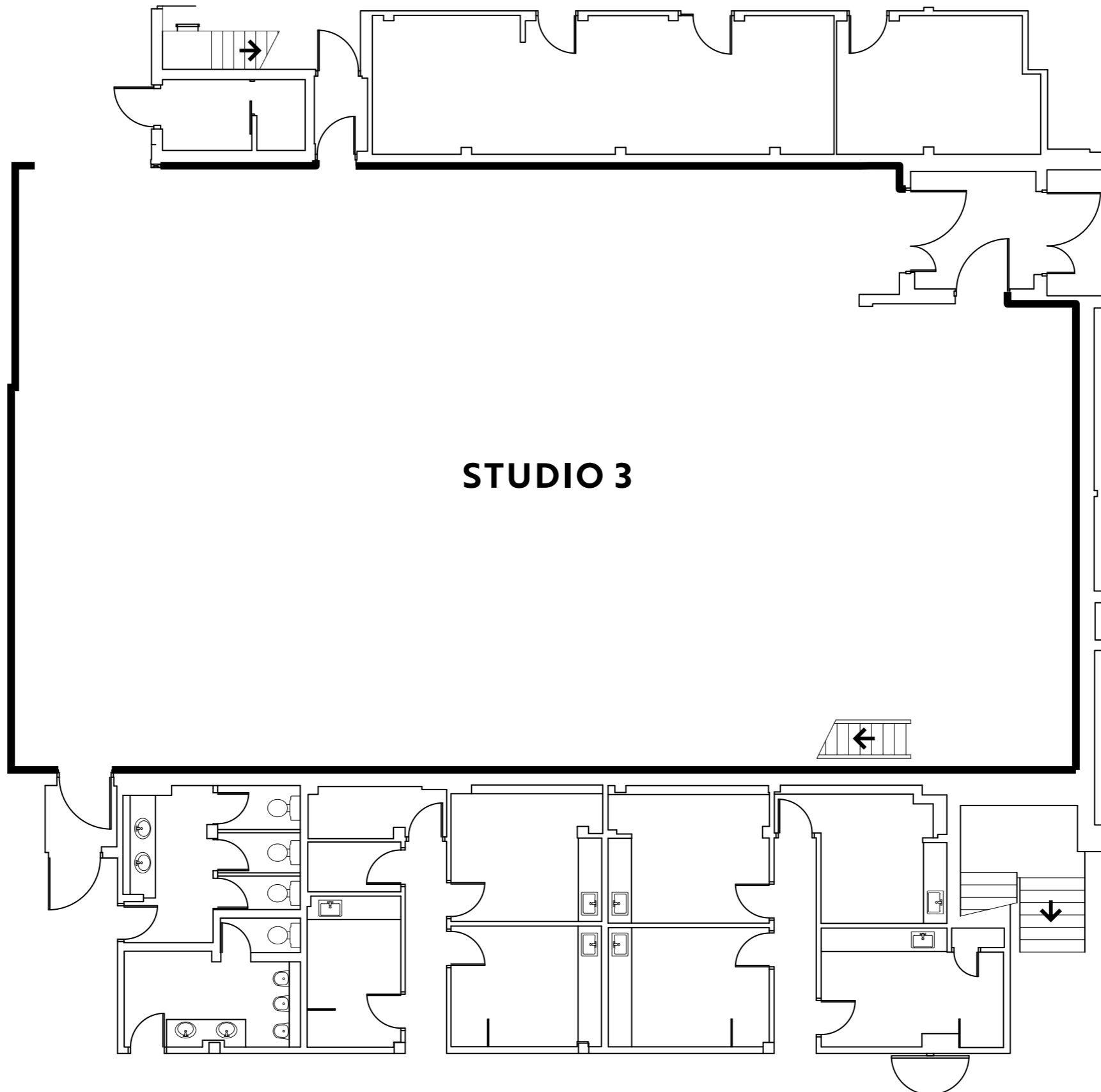
VERSA

MANCHESTER
STUDIOS

STUDIO 3

SPECIFICATION & FLOORPLANS

Floor space:	464 sq m / 5,000 sq ft
Capacity / audience:	100 – 200 persons (dependant upon layout)
Dimensions:	TBC
Grid height / type:	7.35 m / 24.10 ft
Tab track height:	4.20 m / 13.80 ft
Gallery – Production:	N/A
Gallery – Lighting:	N/A
Gallery – Sound:	N/A
Studio power:	450 amp, 3-phase supply



STUDIO 3

VERSA

MANCHESTER
STUDIOS

STUDIO 4

TRANSMISSION

SPECIFICATION & FLOORPLANS

Floor space:	75 sq m / 816 sq ft
Capacity / audience:	120 – 300 persons (dependant upon layout)
Dimensions:	10.5 m x 7.2 m / 34 ft x 23 ft
Grid height / type:	N/A
Tab track height:	N/A
Gallery – Production:	Remote
Gallery – Lighting:	Remote
Gallery – Sound:	Remote
Studio power:	150 amp, 3-phase supply

FLOORPLAN COMING SOON

VERSA

MANCHESTER
STUDIOS

STUDIO 5

TRANSMISSION

SPECIFICATION & FLOORPLANS

Floor space:	230 sq m / 2,500 sq ft
Capacity / audience:	50 persons (dependant upon layout)
Dimensions:	18 m x 13 m / 60 ft x 42 ft
Grid height / type:	10.97 m / 36 ft – Slot Grid and Monopole system
Tab track height:	6.98 m / 22.90 ft
Gallery – Production:	Yes
Gallery – Lighting:	Yes
Gallery – Sound:	Yes
Studio power:	400 amp, 3-phase supply

FLOORPLAN COMING SOON

VERSA

MANCHESTER
STUDIOS

STUDIO 6

TRANSMISSION

SPECIFICATION & FLOORPLANS

Floor space:	390 sq m / 4,300 sq ft
Capacity / audience:	200 persons (dependant upon layout)
Dimensions:	23 m x 17 m / 75 ft x 58 ft
Grid height / type:	11.11 m / 36.45 ft
Tab track height:	6.95 m / 22.80 ft – Slot Grid and Monopole system
Gallery – Production:	N/A
Gallery – Lighting:	N/A
Gallery – Sound:	N/A
Studio power:	450 amp, 3-phase supply

FLOORPLAN COMING SOON

VERSA

MANCHESTER
STUDIOS

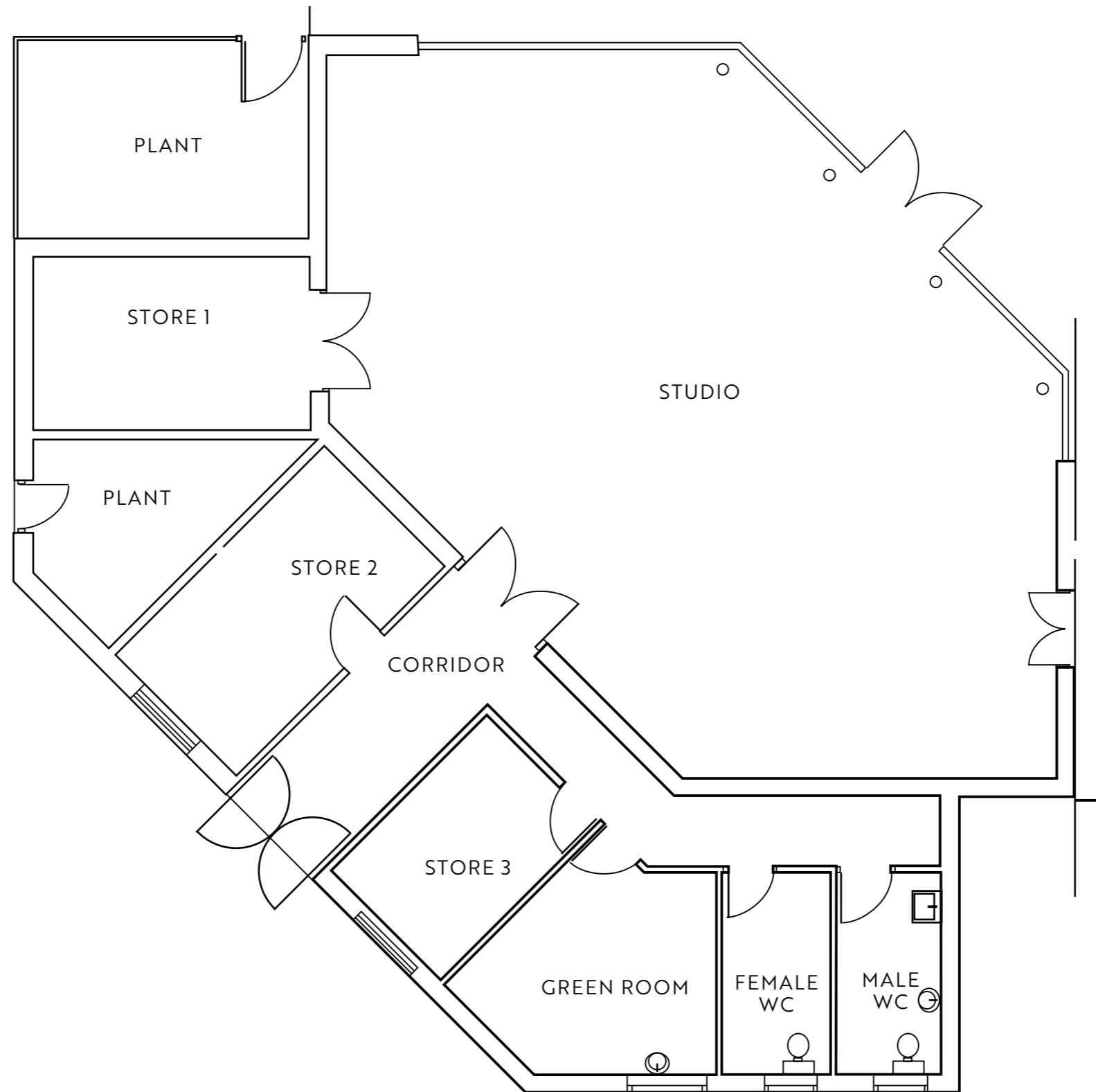
STUDIO 7 BREEZE

SPECIFICATION & FLOORPLANS

Floor space:	65 sq m / 700 sq ft
Capacity / audience:	50 persons (dependant upon layout)
Dimensions:	7.6 m x 7.6 m / 25 ft x 25 ft
Grid height / type:	4.90 m
Tab track height:	3.20 m
Studio power:	250 amps, 3-phase supply

VERSA

MANCHESTER
STUDIOS



VERSA

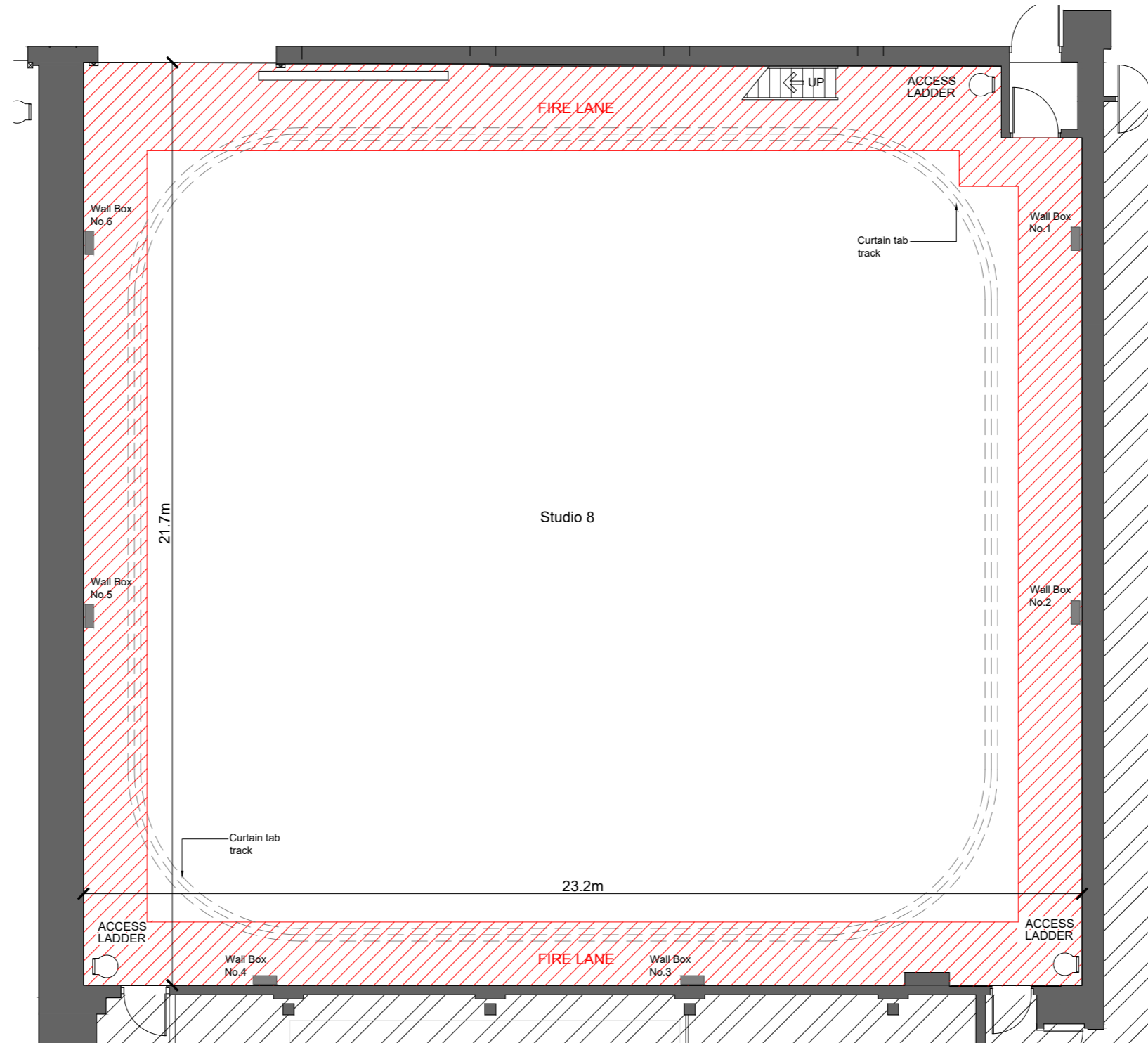
MANCHESTER
STUDIOS

STUDIO 8

TRANSMISSION

SPECIFICATION & FLOORPLANS

Floor space:	500 sq m / 5,300 sq ft
Capacity / audience:	120-350 persons (dependant upon layout)
Dimensions / studio floor:	23 m x 22 m / 76 ft x 70 ft
Dimensions / audio / film Gantry:	9 m x 1.8 m / 29.53 ft x 5.90 ft
Grid height / type:	10.97 m / 36 ft – slot grid and monopole system
Tab track height:	6.98 m / 22.9 ft
Gallery – Production:	Yes
Gallery – Lighting:	Yes
Gallery – Sound:	Yes
Studio power:	850 amp, 3-phase supply



VERSA

MANCHESTER
STUDIOS

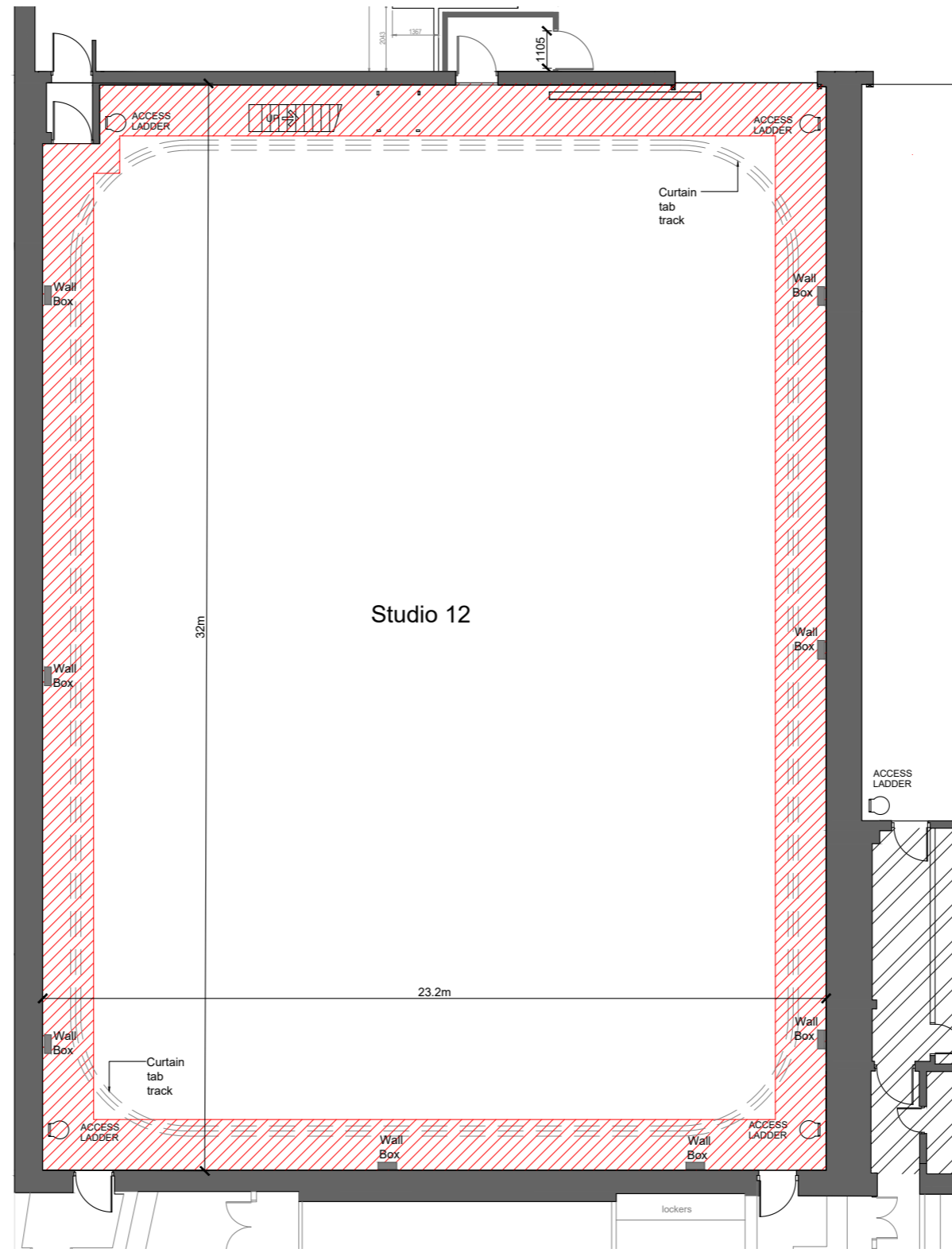
STUDIO 12 TRANSMISSION

SPECIFICATION & FLOORPLANS

Floor space:	736 sq m / 8,000 sq ft
Capacity / audience:	350-500 persons (dependant upon layout)
Dimensions / studio floor:	32 m x 23 m / 105 ft x 76 ft
Dimensions / audio / film Gantry:	9 m x 1.8 m / 29.53 ft x 5.90 ft
Grid height / type:	11.11 m / 36.45 ft – slot grid and monopole system
Tab track height:	6.95 m / 22.8 ft
Gallery – Production:	Yes
Gallery – Lighting:	Yes
Gallery – Sound:	Yes
Studio power:	1,100 amp, 3-phase supply

VERSA

MANCHESTER
STUDIOS



VERSA

MANCHESTER STUDIOS

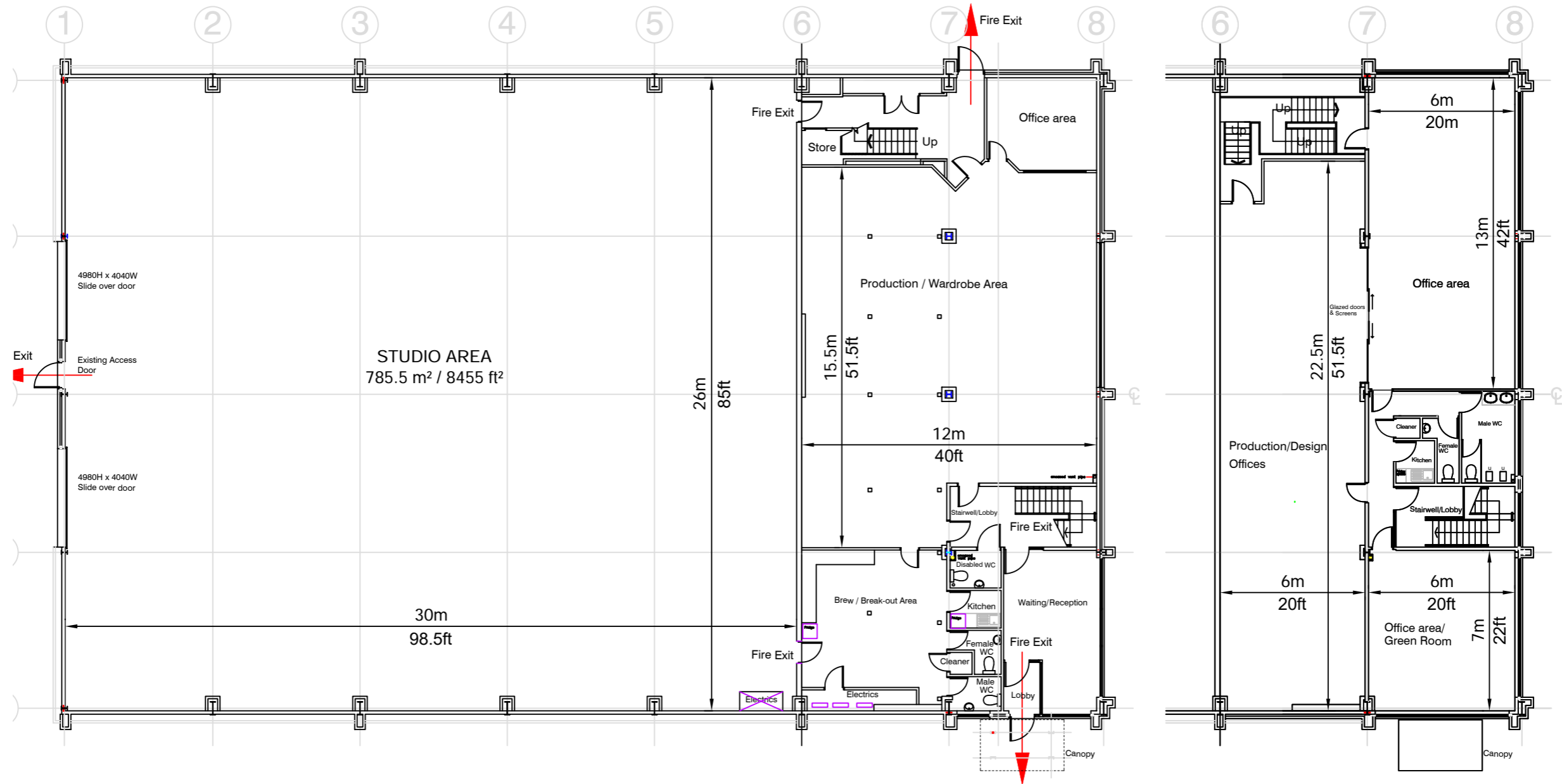
STUDIO 14 BIRCHWOOD

SPECIFICATION & FLOORPLANS

Floor space:	788 sq m / 8,483 sq ft
Capacity / audience:	Up to 880 persons (dependant upon layout)
Dimensions:	12 m x 30 m / 59 ft x 98 ft
Height:	8.4 m / 27 ft at highest point, 6.4 m / 21 ft at lowest point
Grid height / type:	N/A
Loading doors:	2 no. 5m x 4m sectional overhead
Tab track height:	7.3 m / 24 ft
Studio power:	125 amp, 3-phase supply

VERSA

MANCHESTER
STUDIOS



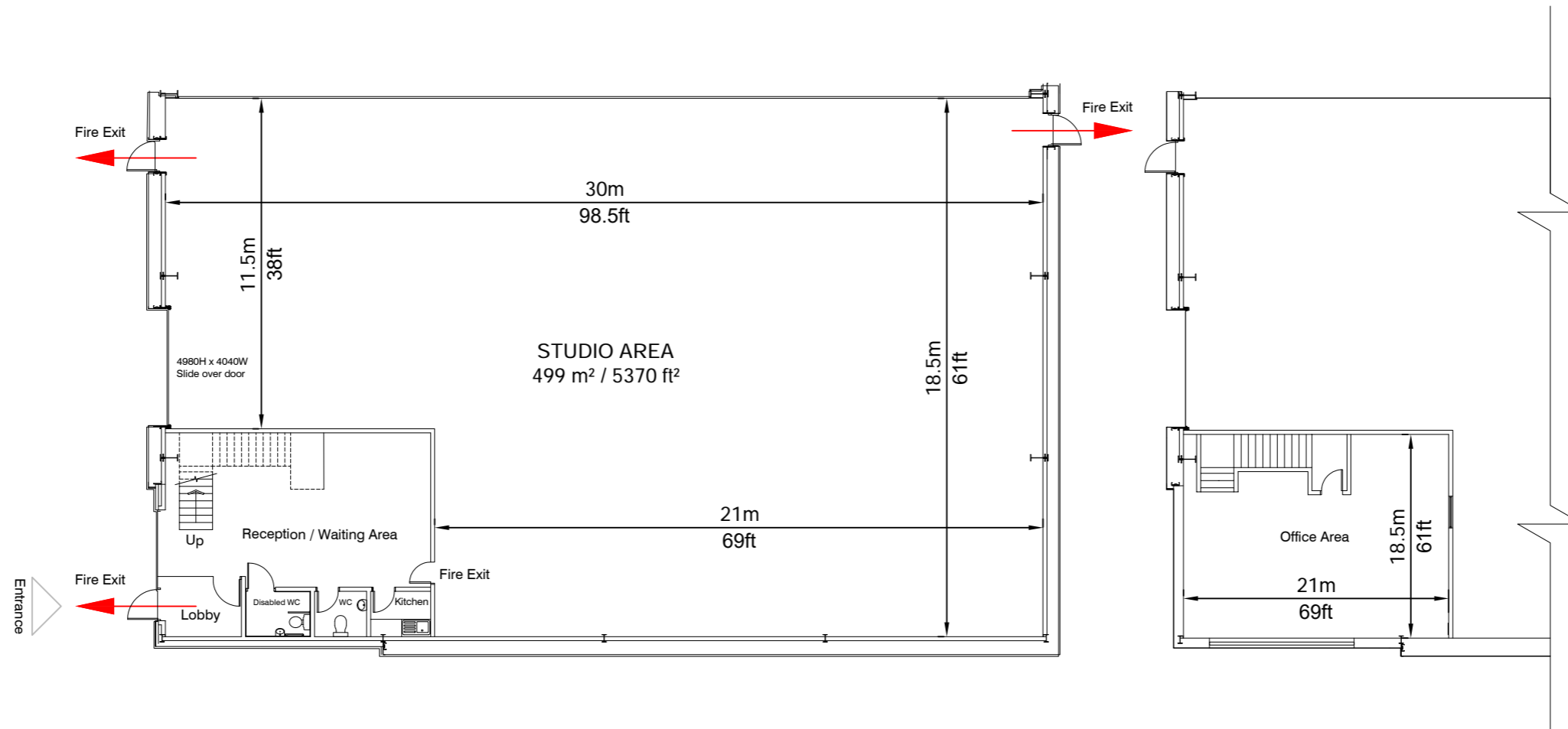
VERSA

MANCHESTER STUDIOS

STUDIO 15 BIRCHWOOD

SPECIFICATION & FLOORPLANS

Floor space:	493 sq m / 5,300 sq ft
Capacity / audience:	Up to 440 persons (dependant upon layout)
Dimensions:	24 m x 32 m / 78 ft x 104 ft
Height:	8.8 m / 28.8 ft at highest point, 6m / 19.5 ft at lowest point
Grid height / type:	N/A
Loading doors:	1 no. 5m x 4m sectional overhead
Tab track height:	7.3 m / 24 ft
Studio power:	63 amp, 3-phase supply



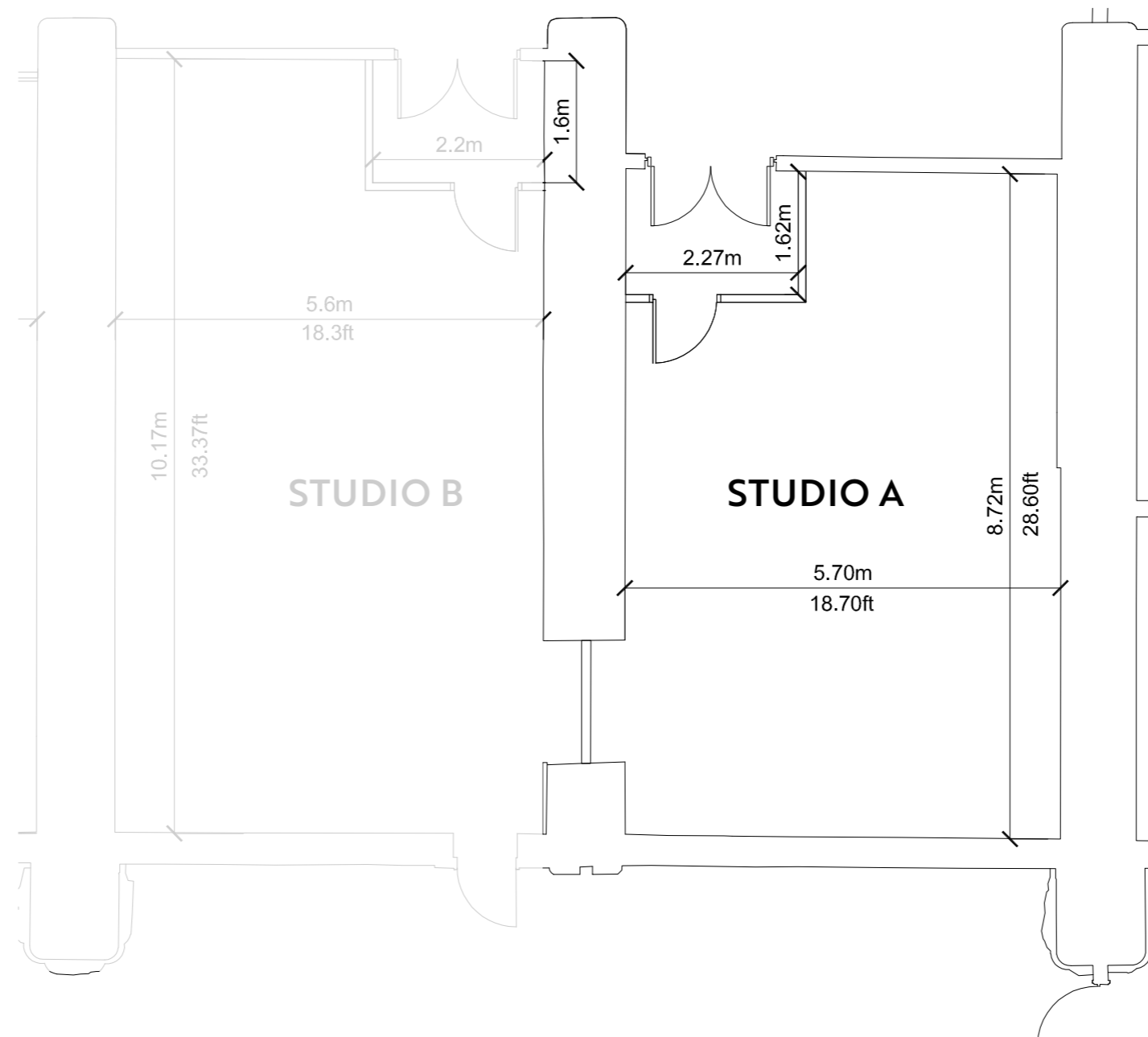
VERSA

MANCHESTER
STUDIOS

STUDIO A DEPARTMENT

SPECIFICATION & FLOORPLANS

Floor space:	49.70 sq m / 534.82 sq ft
Capacity / audience:	5 – 30 persons (dependant upon layout)
Dimensions:	8.72 m x 5.70 m / 28.60 ft x 18.70 ft
Grid height / type:	3.5 m / 11.50 ft – Fixed Lightweight Box Truss
Tab track height:	N/A
Gallery – Production:	Roll in gallery space
Studio power:	63 amp, 3-phase supply



VERSA

MANCHESTER
STUDIOS

**STUDIO B
DEPARTMENT**

**SPECIFICATION &
FLOORPLANS**

Floor space:

58 sq m / 624 sq ft

Capacity / audience:

5 – 30 persons (dependant upon layout)

Dimensions:

10.17 m x 5.70 m / 33.37 ft x 18.70 ft

Grid height / type:

3.5 m / 11.50 ft – Fixed Box Truss Grid System

Tab track height:

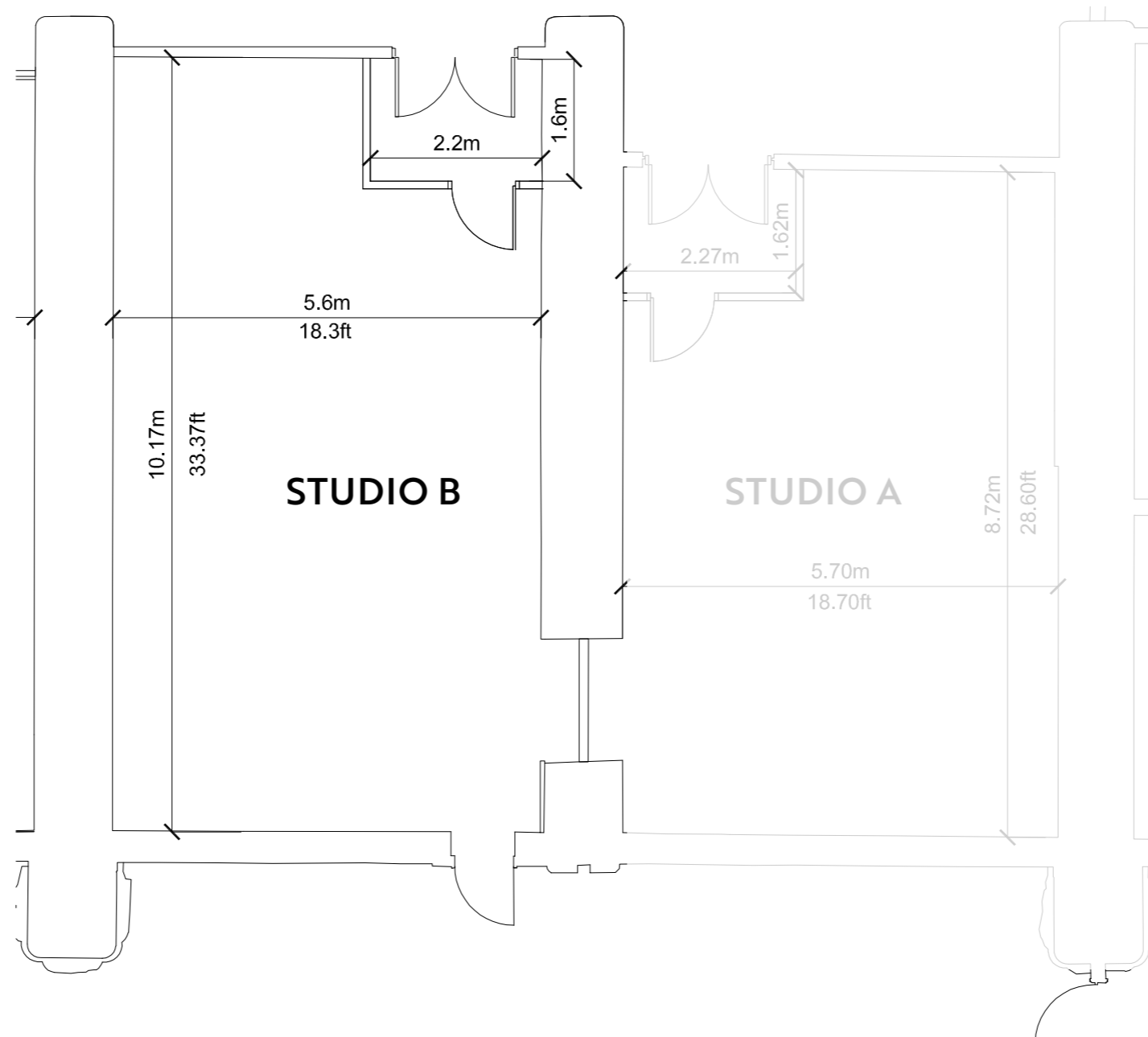
3 m / 9.84 ft

Gallery – Production:

Roll in gallery space

Studio power:

63 amp, 3-phase supply



VERSA

MANCHESTER
STUDIOS

STUDIO C-F DEPARTMENT

SPECIFICATION & FLOORPLANS

Floor space:

58 sq m / 624 sq ft

Capacity / audience:

5 – 30 persons (dependant upon layout)

Dimensions:

10.17 m x 5.70 m / 33.37 ft x 18.70 ft

Grid height / type:

3.5 m / 11.50 ft – Fixed Box Truss Grid System

Tab track height:

3 m / 9.84 ft

Gallery – Production:

Roll in gallery space

Studio power:

63 amp, 3-phase supply

