

VERSA

LEEDS
STUDIOS

STAGE 4

SPECIFICATION & FLOORPLANS

STAGE 4

Floor space:

2523.43 sq m / 27162 sq ft

Electrical - In stage:

400a Power lock three-phase
12x 13a twin switched sockets
4x 32a three-phase
4x 125a single phase
4x 63a single phase
6x 32a single phase
6x 16a single phase

Electrical - Stage tech room

13x Twin switched sockets (Tech Room)
4x 16a single phase

Loading access:

1x Sectional overhead 5.62m x 7.65m

Floor Loading:

30kN/m²

Heating:

Gas fired

Connectivity:

6 outlets in stage

Wifi

Site-wide wireless coverage

Water on stage

Belfast sink with hot/cold supply & 2x cold water feeds

Fire Protection

Smoke detection (can be isolated)

Fire Extinguishers

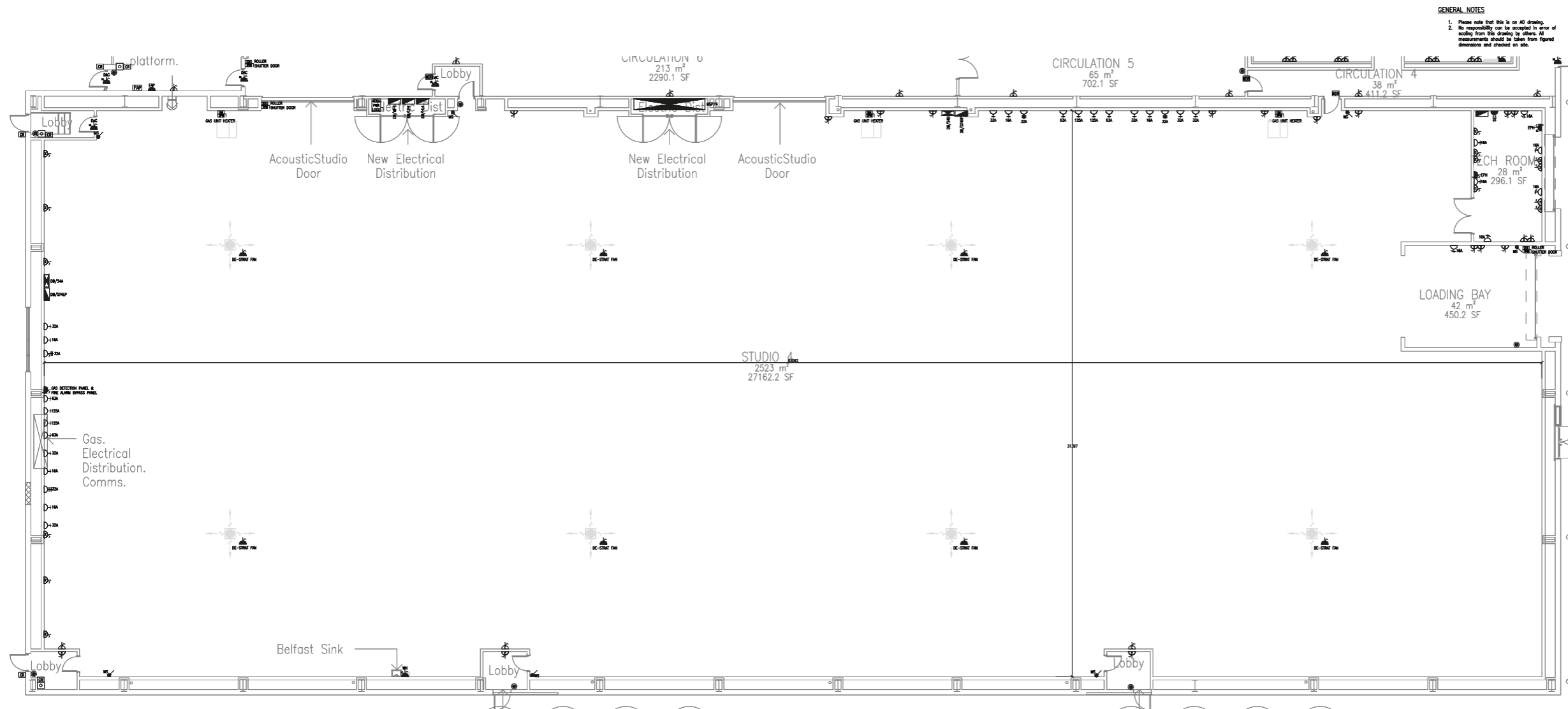
Foam, CO₂

Accessible WC

Yes

VERSA

LEEDS STUDIOS



GENERAL NOTES
 1. Please note that this is an AD drawing.
 2. No responsibility can be accepted in error of omissions from this drawing by others. All measurements should be taken from figured dimensions and checked on site.

LEGEND	
SYMBOL	DESCRIPTION
	CLEANERS SOCKET OUTLET
	SINGLE SWITCHED SOCKET OUTLET
	TWIN SWITCHED SOCKET OUTLET
	SWITCHED FUSED SPUR
	SWITCHED FUSED SPUR WITH FLEX OUTLET
	UNSWITCHED FUSED SPUR
	UNSWITCHED FUSED SPUR WITH FLEX OUTLET
	SINGLE PHASE INDUSTRIAL SOCKET
	THREE PHASE INDUSTRIAL SOCKET
	ISOLATOR
	400A POWER LOCK
	3 PHASE DISTRIBUTION BOARD
	SINGLE PHASE DISTRIBUTION BOARD
	MCCB PANEL BOARD
	MASTER LIGHT SWITCH
	MANUAL CALL POINT
	ACCESS CONTROL GREEN BREAK GLASS
	CARD READER
	WIRELESS CARD READER IN DOOR LOCK